

- 1
- 2
- 3
- 4
- 5
- 6
- 7
- 8
- 9
- 10
- 11
- 12
- 13
- 14
- 15
- 16
- 17
- 18
- 19

SPRING
AISI 631 stainless steel.

STANDARD EXECUTIONS

- **GN 614-KU:** Acetal resin based technopolymer body (POM) blue, AISI 420C hardened stainless steel ball.
 - **GN 614-KD:** Acetal resin based technopolymer body (POM) blue, acetal resin based (POM) technopolymer ball white.
 - **GN 614-MS:** brass body, AISI 420C hardened stainless steel ball.
- Suggested tolerance for plunger housing hole d1 = H7.

WORKING TEMPERATURE

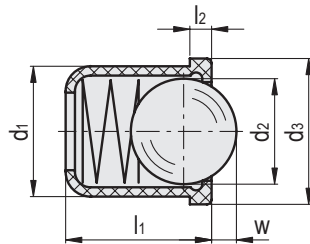
From -30°C to +50°C.

ACCESSORIES

To optimise the use of GN 614 smooth ball spring plungers, have been designed holders for spring plungers GN 614.1 (see page 625).



Conversion Table	
1 mm = 0.039 inch	
d1	
mm	inch
3	0.12
4	0.16
5	0.20
6	0.23
8	0.31
10	0.39
12	0.47



METRIC

GN 614-KU

Code	Description	d1 +0.1	d2	d3	l1	l2 ±0.1	w	Spring preload [N]	Spring max load [N]	⚖️
GN.31998	GN 614-3-KU	3	2.4	3.6	4	0.6	0.6	1.7	3.5	1
GN.32102	GN 614-4-KU	4	3	4.6	5	1	0.8	3	6.5	2
GN.32112	GN 614-5-KU	5	4	5.6	6	1	1	6	9.4	3
GN.32122	GN 614-6-KU	6	5	6.5	7	1	1.6	6.2	12.6	4
GN.32132	GN 614-8-KU	8	6.5	8.5	9	1	1.9	10	20.4	5
GN.32142	GN 614-10-KU	10	8.5	11	13	1.5	2.4	11.9	22.3	6
GN.32152	GN 614-12-KU	12	10	13	16	1.5	3.3	14	25	7

GN 614-KD

Code	Description	d1 +0.1	d2	d3	l1	l2 ±0.1	w	Spring preload [N]	Spring max load [N]	⚖️
GN.32103	GN 614-4-KD	4	3	4.6	5	1	0.8	3	6.5	1
GN.32113	GN 614-5-KD	5	4	5.6	6	1	1	6	9.4	2
GN.32123	GN 614-6-KD	6	5	6.5	7	1	1.6	6.2	12.6	3
GN.32133	GN 614-8-KD	8	6.5	8.5	9	1	1.9	10	20.4	4
GN.32137	GN 614-10-KD	10	8	11	13.5	1.5	2.4	11.9	22.3	5
GN.32147	GN 614-12-KD	12	10	13	16	1.5	3.3	14	25	6

GN 614-MS

Code	Description	d1 +0.1	d2	d3	l1	l2 ±0.1	w	Spring preload [N]	Spring max load [N]	⚖️
GN.31995	GN 614-3-MS	3	2.4	3.6	4	0.6	0.6	1.8	3.5	1
GN.32098	GN 614-4-MS	4	3	4.6	5	1	0.8	2.5	6	2
GN.32107	GN 614-5-MS	5	4	5.6	6	1	1	3	6.5	3
GN.32117	GN 614-6-MS	6	5	6.5	7	1	1.6	5.5	11.5	4
GN.32127	GN 614-8-MS	8	6.5	8.5	9	1	1.9	7	12.5	5

Indexing and positioning elements